



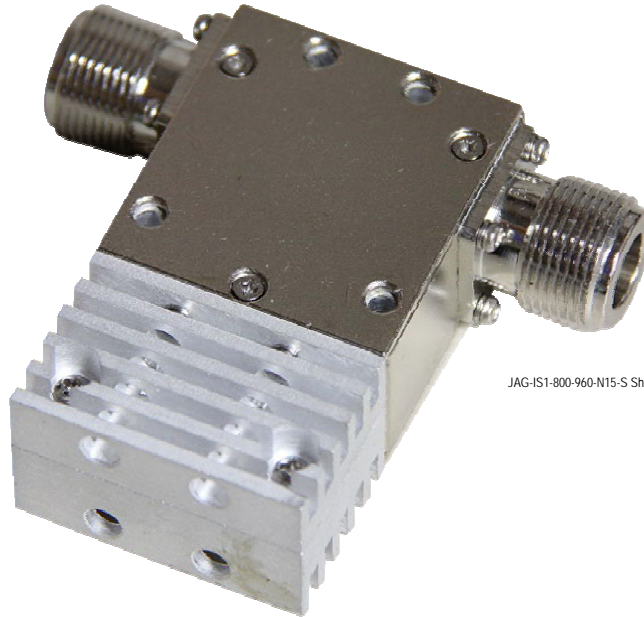
**Electromagnetics**  
*"Quality is everything."*

**ISLI Series**  
**Single Stage Coaxial**  
**Isolator**  
**902-928 MHz**

VHF  
UHF



**JAG-IS1-902-928-S10-X**



JAG-IS1-900-960-N15-S Shown with standard load for illustration

\* This is a general representation of what the actual product may look like.

JAG coaxial isolators offer excellent performance in a compact rugged package. Quality components ensure good isolation with low insertion loss over their full operating temperature range. These isolators come equipped with a variety of load terminations. JAG ISLI series coaxial isolators offer a broad selection of frequency ranges and bandwidth from 132MHz-18GHz and from 1% to full bandwidth. Applications of these isolators range from military to space to commercial and are available in high power versions with connector options from N type to SMA. Other options available are integral attenuators and custom designs.

Electrical Specifications			Mechanical Specifications			Environmental	
Model	JAG-IS1-902-928-S10-X		Model	JAG-IS1-902-928-S10-X		Model	JAG-IS1-902-928-S10-X
Frequency Range (MHz)	902-928	*Note 1	Height	inches (mm)	2.36 (60)	Temperature Range	-30-degC to +75-degC
Bandwidth @ 1.25:1 VSWR or Better (MHz)	28		Width	inches (mm)	1.38 (35)	Notes: 1. Specify model number and exact frequency when ordering 2. Reverse power ratings for isolators are determined by load size with a maximum going up to 100W 3. Replace the X in the model number for optional loads as follows: <ul style="list-style-type: none"> <li>• S = Standard load (default)</li> <li>• 15 = 15W load</li> <li>• 30 = 30W load</li> <li>• 60 = 60W load</li> <li>• 100 = 100W load</li> </ul> Example: JAG-IS1-902-928-S10-15 (comes with a 15W load)	
Maximum Input VSWR	1.25:1		Depth	inches (mm)	0.787 (20)		
Maximum FWD Input Power (Watts)	150		Weight	lb (kg)	2 (0.91)		
Maximum REV Input Power (Watts)	100		Mounting Systems	19-inch rack mount			
Maximum Insertion Loss (dB)	0.35			Cavity			
Minimum Isolation (dB)	22	*Note 2		Plate			
Nominal Impedance ( $\Omega$ )	50		Termination (default)		SMA-f		
Optional Load Sizes (Watts)	15	*Note 3	Termination (optional)		N-f(m)/ SMA-m		
	30	*Note 3	Case Code		IC04		
	60	*Note 3					
	100	*Note 3					

JAG-IS1-902-928-S10-X Product Specification Sheet.

Specifications are subject to change without notice. As a result, all information contained in the present datasheet is subject to confirmation at time of ordering.

Dated: September-17-2014

Issue: 1

Made in Canada

Rev091714.0

Page 1/1



RF EMI Engineering Technology  
 26-1750 Creek Way  
 Burlington, Ontario  
 L7L 7E2 Canada

Email: [info@jagelectromagnetics.com](mailto:info@jagelectromagnetics.com)  
 Web: [www.jagelectromagnetics.com](http://www.jagelectromagnetics.com)  
 Tel (905)-635-7437  
 Fax (905)-332-8093



Copyright © JAG Electromagnetics

JAG's dedication to continuous Research & Development will result in product improvements as they evolve.